



# perspectives

ON DESIGN  
great lakes

design philosophies expressed by the great lakes region's leading professionals

Bradford and Theresa Angelini seek to create timeless beauty, and when designing a home, each decision they make moves toward achieving that goal. With nearly identical formal educations, the couple's roots are firmly planted in a traditional architecture based on the integrity of materials. Their common ground enables the pair to efficiently collaborate and develop forward-thinking architectural solutions that reflect their backgrounds and values. In 1989, Angelini & Associates Architects began with its two founding members and has grown over the years to include some of the region's most talented designers and architects. The partners embrace an artful design approach with an emphasis on strong, innovative problem-solving. The team considers a variety of alternatives for every challenge, knowing that allowing a creative design process brings about the best results. Remaining uncommitted to a single architectural style, the firm creates structures that reflect design integrity—holding true to the purpose of the individual project. Each house is a culmination of materials, ideas, and decisions based on collaboration with the owner's needs and desires, interpreted into built form.

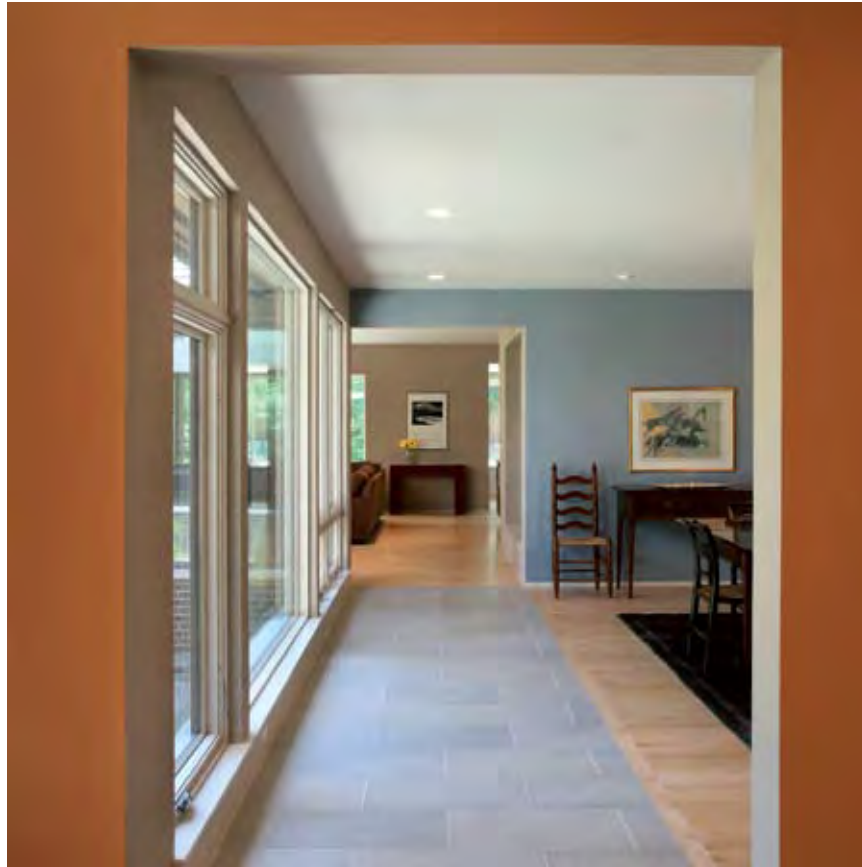


“Working in an area that sets high intellectual and artistic expectations means constant stimulation and ever-changing challenges.”

—Theresa Angelini



ANGELINI & ASSOCIATES ARCHITECTS



“Good aesthetics requires a patient search.”

—Bradford Angelini



ABOVE: With an elevated floor and a low ceiling, the intimate dining room at Windy Crest opens to the sky above by extending the glass wall horizontally onto the ceiling plane. The panoramic southern views of the city below allowed for solar gain that we controlled by detailing concealed motorized shades within the structure of the roof and buffet cabinetry below the window.

*Photograph by Jason B. Wise*

FACING PAGE: The house on Heatherway is composed of three primary building blocks organized around an open courtyard to allow for natural light and protected views to the adjacent rooms. The linear circulation axis links the front entry hall, formal dining room, and great room, with the adjacent courtyard overlapping the interior spaces. The main stair incorporates metal framing, thin maple treads, open risers, and natural lighting from the skylight above to create an airy yet sculptural centerpiece. In collaboration with Sally Klein Interiors, we achieved the perfect finishes.

*Photograph by Jeff Garland Photography*

PREVIOUS PAGES LEFT: The homeowner wanted a sleek, efficient kitchen without sacrificing comfort or function. We used contemporary clean materials and minimalist details, combined with an open floor plan, to achieve this goal. Cabinets, appliances, and lighting reinforce the home's interior and exterior aesthetic. Lowering the ceiling plane defines the space as more intimate within the larger volume of the great room and casual dining area.

*Photograph by Jeff Garland Photography*

PREVIOUS PAGES RIGHT: Exterior elements of the Heatherway home harmonize for a crisp look: cool gray roof shingles, smooth dark purple brick, and clear vertical cedar paneled siding with a pickled stain. The second-floor massing appears to float above the structure below, emphasized by the cantilever and the high, horizontal window bands.

*Photograph by Jeff Garland Photography*

“Every challenge deserves the consideration of three to five solutions; the best one will certainly win out.”

—Bradford Angelini



RIGHT: The winged roof angles crown the hilltop house and give the home a commanding presence. We used an inverted-pitched roof within the exercise room to allow for tall windows and a high ceiling within, focusing views to the outdoors. Working with Terrafirma Inc on landscaping and construction, we created an unforgettable home. Exterior deck platforms below compose a dynamic path through a pond and stream, offering a geometrically constructed base to the house within the larger natural setting.

Photograph by Gary Easter Photographics

“The more engaged the homeowner, the better the home.”

—Theresa Angelini



ABOVE: The home at Heron Oaks sits gently within a wooded area, with an entry sequence that captures the tranquility of both the natural surroundings and home's interior. Upon approaching the entry, the butterfly roof of the informal dining space and the gabled guest wing frame the front porch. The Mondrian-inspired pattern of the siding provides subtle, clean geometric lines for added visual interest.

FACING PAGE: The interior spaces adjacent to the enclosed courtyard appear to extend into the outdoor space. We reinforced this by the use of floor tile on both the floor surface of the interior spaces and the perimeter ground plane of the exterior. White stucco walls reflect light into the adjacent hall, entry, and great room. At the screened porch, the Mondrian influence appears in the screen divisions, providing a foreground to the views beyond.

*Photographs by Jeff Garland Photography*







“Tried-and-true materials offer an advantage; they create handsome, naturally sustainable, and durable architecture.”

—Theresa Angelini





ABOVE: Timber-framed mountain homes served as the inspiration for this timeless house on the ravine at Delhi Glen; we worked with Christian Tennant Custom Homes on development and construction. Window openings, stone, natural cedar, board and batten siding, and exposed timber are composed in horizontal and vertical patterns that create a balanced complexity of color and texture with a sense of scale.

*Photograph by Bradford Angelini*

RIGHT: We knew that finding the correct proportions and spacing for the exposed trusses was crucial – it was important to give scale to the room without overwhelming the space. The visual lightness of the custom hand-hewn trusses contrast with the massive stone fireplace to add interest and a human dimension to the room. With the help of Nicolette Bozsik Interiors, we created an overall look that offers elegance with a warm, rustic quality.

*Photograph by Beth Singer*

FACING PAGE: Thanks to collaboration with Donna Newsom Interiors and builder Christopher J.R. Laycock, the dining and living spaces at Cobblestone Farm employ a traditional architectural vocabulary—while still meeting exacting LEED technical construction standards. The exterior shell of insulated concrete forms is clad in wood siding, cultured stone, and drywall, creating warm, comfortable spaces on the interior. Windows and doors are proportioned to a residential scale and natural daylight highlights the radiant heated tile floors and pickled wood walls and ceiling.

*Photographs by Jeff Garland Photography*





“Something as simple as using three-dimensional models will engage others to give constructive design criticism, improving the outcome.”

—Bradford Angelini



LEFT: The owner of the house on Indian River has a passionate interest in Tibetan art and architecture, which we reflected in the design of a tapered meditation tower inspired by those forms. We used clean lines of the stucco tower as a contrast to the textured horizontal cedar siding on the body of the house. Inside, the simplicity of the stair makes a striking impression. Natural light from the meditation space at the top of the tower filters through the stair treads to the level below.

FACING PAGE: Working closely with builder, Paul Dannels, we translated the owner’s desire to have a study with pilot-seat views into a symbolic tree house, nestled between the main house and the meditation tower. A Y-shaped timber structure represents the trunk and branches, while a cantilevered porch creates a platform. The roof serves as the tree canopy, with open framing filtering the sunlight, creating patterns on the wall of the home.

*Photographs by Jeff Garland Photography*

