



SIGNATURE HOMES

HIGH STYLE FROM THE FINEST ARCHITECTS AND BUILDERS

SIGNATURE HOMES



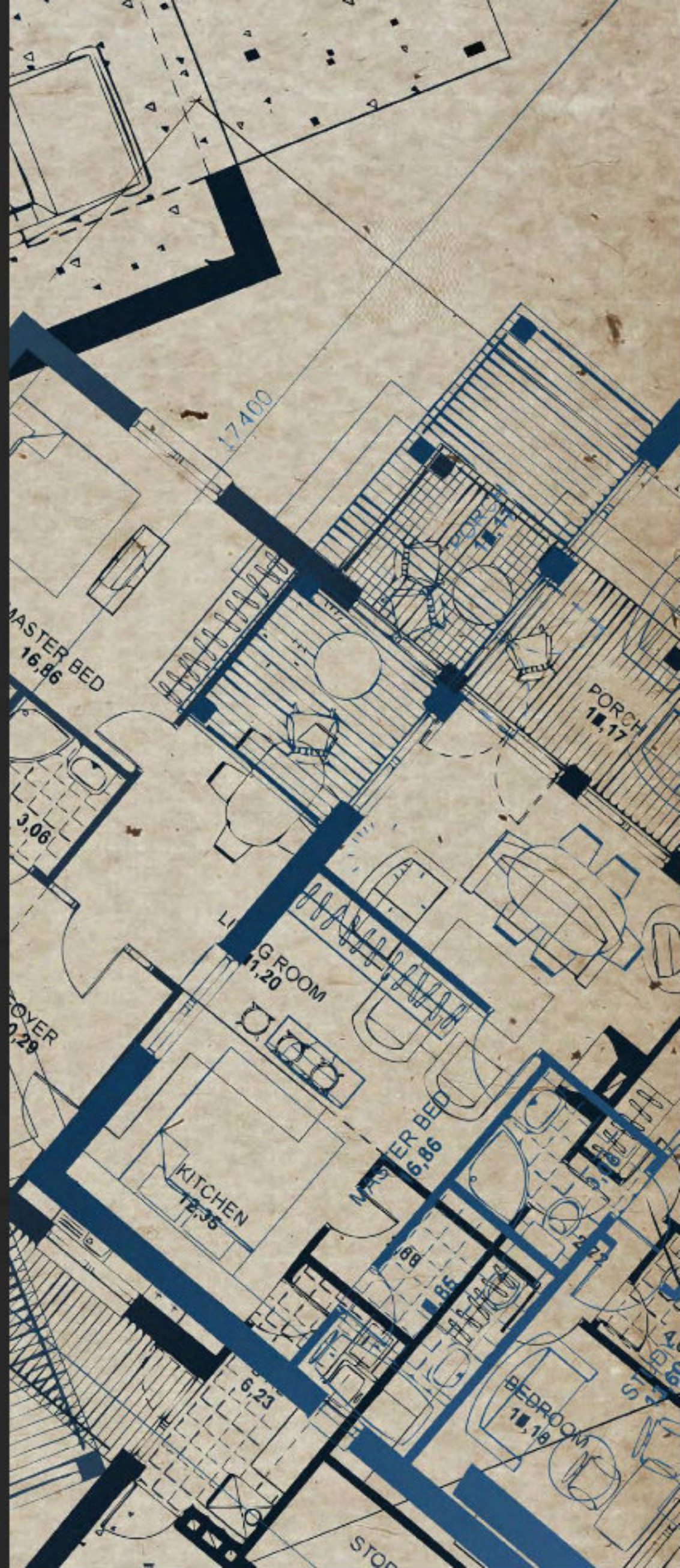
DESIGNS AND STRUCTURES FROM LEADING
ARCHITECTS AND BUILDERS



Signature Homes presents an inspiring array of beautiful homes from California to New York designed by more than 40 of the nation's foremost architects and custom home builders. Whether specializing in historical restoration, upscale renovation, or ground-up design, the contributing professionals are united in their dedication to principles of timelessness. Skillfully balancing form and function to create spaces that enhance modern lifestyles, they take their design cues from the unique requirements of the residents, either complementing the local architectural vernacular or creatively responding to it.

Within the collection, you'll be delighted by hundreds of remarkable residences designed by top architects, including Alfred and Cecilia Quezada in Northern California, Kyle Webb in Colorado, Paul Florian in Illinois, Robert Gurney in Washington, D.C., Greg Busch in Georgia, and dozens of their most esteemed peers. You'll enjoy the artistry and craftsmanship of the Pacific Northwest's Fairbank Construction and New England's C.H. Newton Builders, among others.

The firms' creations are presented through large photographs that show the most unique aspects of each home, inside and out. Accompanying editorial gives the projects context, explaining the reason behind the style, layout, materials, and more. Whether you desire a new place to call home or you're planning to reinvent your current residence—or you're just dreaming of the possibilities—*Signature Homes* abounds with inspiration.





OpenSpace Architecture



Angelini & Associates Architects

CONTENTS

WEST

| | |
|---|----|
| ALLEN-GUERRA ARCHITECTURE | 11 |
| FAIRBANK CONSTRUCTION COMPANY | 19 |
| FENTRESS ARCHITECTS | 25 |
| JAMES HANN DESIGN | 35 |
| K. H. WEBB ARCHITECTS | 41 |
| MARIA OGRYDZIAK ARCHITECTURE | 47 |
| MICHAEL BURCH ARCHITECTS | 53 |
| NEST ARCHITECTURE | 59 |
| OPENSACE ARCHITECTURE | 63 |
| QUEZADA ARCHITECTURE | 67 |
| ROBERT J TAVASCI ARCHITECT | 71 |

MIDWEST

| | |
|--|-----|
| 12/12 ARCHITECTS | 77 |
| ANGELINI & ASSOCIATES ARCHITECTS | 83 |
| ARCHITECT JEFF WHYTE + ASSOC. INC. | 89 |
| AXIOS ARCHITECTS & CONSULTANTS | 93 |
| BUGAJ ARCHITECTS | 103 |
| DERRICK ARCHITECTURE | 109 |
| FLORIAN ARCHITECTS | 115 |
| GAZSO DESIGN, INC. | 123 |
| JOSEPH TROJANOWSKI ARCHITECT, PC. | 127 |
| STUDIO 1 ARCHITECTS | 133 |
| TIGERMAN MCCURRY ARCHITECTS | 141 |



The Big Chill Cottage

THE BIG CHILL COTTAGE

TYPE: single-family

SIZE: 4,000 square feet

MAIN ROOMS: dining and living area, kitchen, back porch and detached garage

What was once a compartmentalized hunter's cottage on Michigan's picturesque Dunham Lake is now a spacious vacation retreat that seamlessly unites the outdoors with the indoors. An extensive renovation took the structure down to its bones to create an open respite just waiting for summer vacation. Porches on both sides of the home were carved out and redesigned in order to provide views and connections to the exterior. The front porch now features an outdoor room, complete with a fireplace, while the back porch extends the living area toward the lake. The new wall of windows along the back of the house brings the lake into the home, where guests can enjoy glimpses of its glacial blue waters from the kitchen, dining room, and living area. Walls were removed and structural beams now define the spaces to make this area of the home a continuous open space with subtle divisions. A detached garage features an art studio apartment above with a screened-in porch at grade, so as not to obstruct the views from the main residence. Michigan rubble granite at the base of both structures forms the rustic foundation while the lapped cedar siding above echoes the bark of the surrounding trees.

Photographs by Jeff Garland Photography





ANN ARBOR PIED-À-TERRE

TYPE multifamily

SIZE 2000 square feet

MAIN ROOMS kitchen, dining, living area, powder room, master suite, stairway

Located at the top of a high-rise in downtown Ann Arbor, this two-story airy white remodeled condominium is a refreshing oasis for entertaining and relaxing. The geometric massing of this tall building is reminiscent of a Rubik's cube with cubic pieces stepped back at the top, which are now expressed in this condo unit. The open layout of the 10th-floor living space includes two open cube terraces offering exhilarating views to downtown and Michigan Stadium in the distance. Large format square porcelain floor tiles extend from the interior onto both outdoor terraces, creating a seamless continuation of the building's cubic aesthetic. This modern concept was initially introduced by the couple's daughter-in-law and then Angelini & Associates Architects expanded and developed the idea into a strikingly clean and geometric interior. The floating staircase serves as the architectural centerpiece with the steel stair structure concealed, allowing the wood treads to cantilever seemingly effortlessly from the monolithically tiled wall surface. Above the staircase, the four walls of the original skylight are clad in mirrors to bring more sunlight into the space. The daylight dances on the white interior, raking the stone surface to create an ever-changing kaleidoscope of light and shadow.

Photographs by Jeff Garland Photography



