

Living-Learning Communities Study

This yearlong, \$30,000 study, a collaboration between architect Angelini & Associates and the University of Michigan, sought to create more intellectually stimulating residential environments on academic campuses. The researchers developed a plan for transforming existing residence halls into living-learning communities—a close coupling of educational facilities with residential areas—and designed new facilities as well. The team also examined the role that such environments play in enhancing undergraduate education.

Research included a literature review on environment and behavior, student housing,

and architecture; student surveys regarding needs and preferences; communication with administrators of living-learning programs nationwide; focus groups; and assessments of student rooms.

The study concluded that residence halls designed and programmed as living-learning communities within the modern university setting nurture education and contribute to student satisfaction and retention. The study recommended facilities that feature discrete units ranging from 150 to 200 students, with study areas, administrative and faculty spaces, small meeting rooms, classrooms, and “breakout spaces” for larger meetings.

PRINCIPAL RESEARCHERS/AUTHORS:

Angelini & Associates, Ann Arbor, Michigan—Bradford L. Angelini, Theresa L. Angelini (principals), Suzanne Irwin (project architect), Nancy Wells (environmental psychologist); University of Michigan, Ann Arbor, Michigan—Jacqueline Mims-Hickmon, Jonathan Plummer (housing), William Durell, David Kluck (dining services), Sandra Gregerman (director, undergraduate research opportunity program), Victoria Hueter (architect, housing design group), William Vlisides (conference management services coordinator)

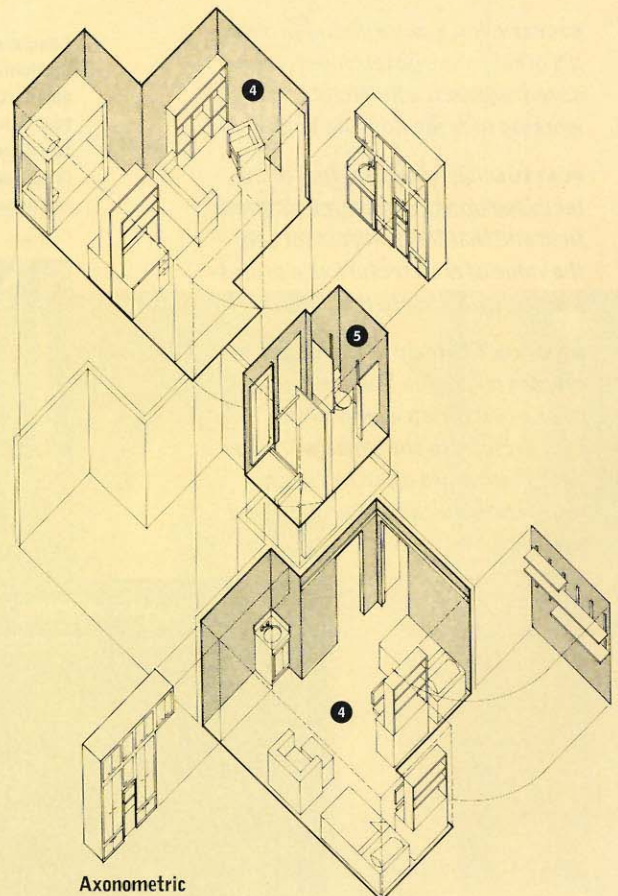
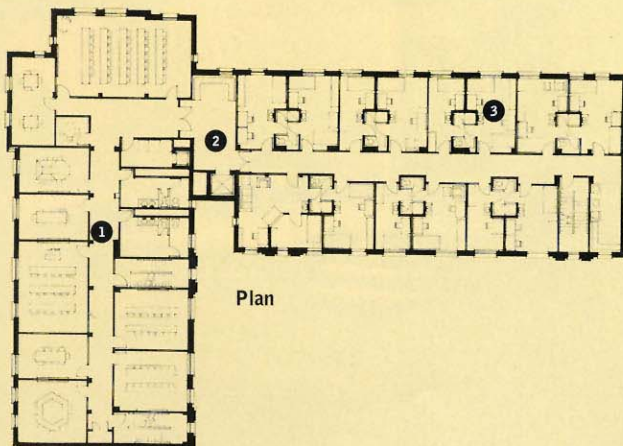
CLIENT/FUNDING: The University of Michigan

MAXMAN: *Institutions that may not have the time or money for a similar effort can take a look at the research conducted at Michigan and apply it on their campuses.*

PLATTUS: *It's a great example of programming research and can be quite influential in some of the bigger universities. Some campuses got built too quickly and very little thought was put into what they were like as environments.*

BECKLEY: *Right. It's important that some attention be brought to these places.*

- ① classroom wing
- ② lounge
- ③ dormitory room
- ④ double room
- ⑤ shared bathroom



GILATION